

ADVISORY PARKING AND TRAFFIC BOARD MINUTES

August 31, 2017

1:30 PM

160 S Macy Street

City-County Government Center

Meeting Room A & B

Fond du Lac, Wisconsin

ROLL CALL

Attendance

Present

Ned Derksen (late arrival 1:37)

Andrew Klemp

Brian Kolstad

Renee Wagner

Absent

Lawrence Foster

Brent Schumacher

Troy Goebel

Administrative Staff

Paul De Vries, City Engineer

Aaron Goldstein, Police Captain

Declaration Quorum Present

Chairperson Klemp declared a quorum present.

CONSENT AGENDA

July 20, 2017 Minutes

A Motion was made by Renee Wagner to approve the minutes of July 20, 2017 and seconded by Brian Kolstad, and the motion was **Passed**.

Ayes: Derksen, Klemp, Kolstad, Wagner

Absent: Foster, Goebel, Schumacher

INPUT

Audience Comments

The presiding officer shall limit comments to items noticed only on the agenda.

There were no audience comments at this meeting.

ACTIONS

This proposed Ordinance change would add parking restrictions on Scott Street east of Park Avenue.

Request to add parking restriction "Parking Prohibited at All Times" in accordance with Code of Ordinances Section 630-6 and Section 630-39, Schedule "E".

Location: Scott Street, East, Both Sides; From the east right-of-way of Park Avenue, east 90'.

Initiator: City Engineer

A Motion was made by Brian Kolstad to amend location of proposed Ordinance change adding parking restrictions on Scott Street east of Park Avenue, changing the distance from the east right-of-way of Park Avenue from 90' to 70' and seconded by Ned Derksen, and the motion was **Passed**.

Ayes: Derksen, Klemp, Kolstad, Wagner

Absent: Foster, Goebel, Schumacher

This proposed Ordinance change would add parking restrictions on Park Avenue south of Scott Street.

Request to add parking restriction "Parking Prohibited at All Times" in accordance with Code of Ordinances Section 630-6 and Section 630-39, Schedule "E".

Location: Park Avenue, North, East Side; From the south right-of-way of Scott Street, south 50'.

Initiator: City Engineer

A Motion was made by Ned Derksen to approve proposed Ordinance change adding parking restrictions on Park Avenue south of Scott Street and seconded by Renee Wagner, and the motion was **Passed**.

Ayes: Derksen, Klemp, Kolstad, Wagner

Absent: Foster, Goebel, Schumacher

This proposed Ordinance change would add a Bus Loading Zone on the south side of Scott Street west of Mohawk Avenue.

Request to add parking restriction "No Parking Except for Authorized Vehicles" in accordance with Code of Ordinances Section 630-9, A.(4) and Section 630-43, Schedule "I", C. From 6:00 a.m. to 6:30 p.m. on Weekdays.

Location: Scott Street, East, South Side; From the west right-of-way of Mohawk Avenue, west 60 feet.

Initiator: City Engineer

A Motion was made by Ned Derksen to approve proposed parking Ordinance that would add a Bus Loading Zone on the south side of Scott Street west of Mohawk Avenue and seconded by Brian Kolstad,

and the motion was **Passed.**

Ayes: Derksen, Klemp, Kolstad, Wagner

Absent: Foster, Goebel, Schumacher

This proposed Ordinance removes a 2-hour limited time parking restriction on Forest Avenue between Military Road and Brooke Street.

Request to remove parking restriction "Limited Time Parking" in accordance with Code of Ordinances Section 630-10 and Section 630-44, Schedule "J", D. Two Hours (10) From 8:00 a.m. to 5:00 p.m., except Sundays.

Location: Forest Avenue, Both Sides; Between South Military Road and the Chicago & Northwestern Railroad Company tracks.

Initiator: Edward Schneider, 151 Forest Avenue

A Motion was made by Brian Kolstad to approve Ordinance removing a 2-hour limited time parking restriction on Forest Avenue between Military Road and Brooke Street and seconded by Renee Wagner, and the motion was **Passed.**

Ayes: Derksen, Klemp, Kolstad, Wagner

Absent: Foster, Goebel, Schumacher

This proposed Ordinance removes metered parking and adds a 2-hour restriction on Western Avenue between Macy Street and Main Street along with cleaning up various conflicting parking restrictions in the Ordinances.

Request to add parking restriction "Limited Time Parking" in accordance with Code of Ordinances Section 630-10 and Section 630-44, Schedule "J", D. Two Hours (12) From 8:00 a.m. to 6:00 p.m. daily, except Saturdays and Sundays.

Location: Western Avenue, North Side; From a point 62 feet east of the east right-of-way of Macy Street, east 80 feet.

Location: Western Avenue, South Side; From a point 53 feet east of the east right-of-way of Macy Street, east 64 feet.

Request to add parking restriction "Parking Prohibited at All Times" in accordance with Code of Ordinances Section 630-6 and Section 630-39, Schedule "E".

Location: Western Avenue, Both Sides; Between Macy Street and South Main Street except for designated 2-hour limited time parking.

Request to remove parking restriction "Limited Time Parking" in

accordance with Code of Ordinances Section 630-10 and Section 630-44, Schedule "J", C. Sixty Minutes (8) Between 8:00 a.m. and 6:00 p.m., except Sundays and legal holidays.

Location: Western Avenue, Both Sides; Between Main Street and Court Street.

Request to remove parking restriction "No Parking Except for Authorized Vehicles" in accordance with Code of Ordinances Section 630-9, A.(1) and Section 630-42, Schedule "H".

Location: Western Avenue, South Side; From a point 46 feet west of the west curbline of South Main Street, west 26 feet.

Request to remove parking restriction "Parking Prohibited at All Times" in accordance with Code of Ordinances Section 630-6 and Section 630-39, Schedule "E".

Location: Western Avenue, North Side; From the west curbline of South Main Street, west 88 feet.

Location: Western Avenue, South Side; From the west curbline of South Main Street, west 120 feet.

Request to remove parking restriction "Parking, Standing, or Stopping Prohibited" in accordance with Code of Ordinances Section 630-6 and Section 630-41, Schedule "G".

Location: Western Avenue, North Side; From the east curbline of South Macy Street easterly 62 feet.

Location: Western Avenue, South Side; From the east curbline of Linden Street easterly 53 feet.

Initiator: Community Development Director

A Motion was made by Ned Derksen to approve proposed Ordinance removing metered parking and adding a 2-hour restriction on Western Avenue between Macy Street and Main Street along with cleaning up various conflicting parking restrictions in the Ordinances and seconded by Brian Kolstad, and the motion was **Passed**.

Ayes: Derksen, Klemp, Kolstad, Wagner

Absent: Foster, Goebel, Schumacher

ADJOURN

A Motion was made by Renee Wagner to adjourn at 2:00 PM and seconded by Brian Kolstad, and the motion was **Passed**.

Ayes: Derksen, Klemp, Kolstad, Wagner

Absent: Foster, Goebel, Schumacher

**ADVISORY PARKING AND TRAFFIC AGENDA
CITY OF FOND DU LAC, WISCONSIN**

Title: July 20, 2017 Minutes

Subject:

Initiator:

Location:

Recommendation:

ATTACHMENTS:

	File Name	Description
	Minutes_2017_7_20_Meeting(356).pdf	Minutes

ADVISORY PARKING AND TRAFFIC BOARD MINUTES

July 20, 2017

1:30 PM

160 S Macy Street

City-County Government Center

Meeting Room A & B

Fond du Lac, Wisconsin

ROLL CALL

Attendance

Present

Ned Derksen

Lawrence Foster

Andrew Klemp

Brian Kolstad

Renee Wagner

Troy Goebel

Absent

Brent Schumacher

Administrative Staff

Paul DeVries, City Engineer

Aaron Goldstein, Police Captain

Declaration Quorum Present

Deputy Clerk, Arlene Mand, called the meeting to order and declared a quorum present.

ELECTION OF OFFICERS

Election Of Chairperson

Advisory Parking & Traffic Board Member Andrew Klemp was nominated for Chairperson by Advisory Parking & Traffic Board Member Renee Wagner.

With no further nominations being made, Deputy Clerk Mand declared the nominations closed.

Advisory Parking & Traffic Board Member Klemp was elected Chairperson by unanimous vote.

Election Of Vice Chairperson

Advisory Parking & Traffic Board Member Renee Wagner was nominated for Vice Chairperson by Advisory Parking & Traffic Board Member Lawrence Foster.

With no further nominations being made, Chairperson Klemp declared the nominations closed.

Advisory Parking & Traffic Board Member Wagner was elected

Vice Chairperson by unanimous vote.

CONSENT AGENDA

December 15, 2016 Minutes

A Motion was made by Lawrence Foster to approve the minutes of December 15, 2016 and seconded by Renee Wagner, and the motion was **Passed**.

Ayes: Derksen, Foster, Goebel, Klemp, Kolstad, Wagner

Absent: Schumacher

INPUT

Audience Comments

Spoke in opposition to proposed Ordinance change that would add parking restrictions on Scott Street and Park Avenue

Todd Osier, 238 E Scott St, Fond du Lac

Kelly Jo Moore, Tobacco Outlet Plus Grocery, 471 N Park Ave, Fond du Lac

Read into record as opposed to proposed Ordinance change that would add parking restrictions on Scott Street and Park Avenue

John & Karen Beesley, 231 E Scott St, Fond du Lac

ACTIONS

This proposed Ordinance change would add parking restrictions on Scott Street east of Park Avenue.

Request to add parking restriction "Parking Prohibited at All Times" in accordance with Code of Ordinances Section 630-6 and Section 630-39, Schedule "E".

Location: Scott Street, East, Both Sides; From the east right-of-way of Park Avenue, east 90'.

Initiator: City Engineer

A Motion was made by Brian Kolstad to table proposed Ordinance change until the next Advisory Parking & Traffic meeting and seconded by Tony Goebel, and the motion was **Passed**.

City Engineer, Paul DeVries, explained the proposed changes to parking restrictions on Scott Street and Park Avenue. Considering audience comments, as well as questions and suggestions that arose through discussion, recommendation for further investigation into additional options was proposed for both Action Items A and B.

Ayes: Derksen, Foster, Goebel, Klemp, Kolstad, Wagner

Absent: Schumacher

This proposed Ordinance change would add parking restrictions on Park Avenue south of Scott Street.

Request to add parking restriction "Parking Prohibited at All Times" in accordance with Code of Ordinances Section 630-6 and Section 630-39, Schedule "E".

Location: Park Avenue, North, East Side; From the south right-of-way of Scott Street, south 50'.

Initiator: City Engineer

A Motion was made by Tony Goebel to table proposed Ordinance change until the next Advisory Parking & Traffic meeting and seconded by Renee Wagner, and the motion was **Passed**.

Ayes: Derksen, Foster, Goebel, Klemp, Kolstad, Wagner

Absent: Schumacher

This proposed Ordinance would add stop signs for Police Memorial Drive, Knights Way, and Mihill Avenue at their intersections with Camelot Drive.

Request to add Camelot Drive as "Through Street" in accordance with Code of Ordinances Section 630-3, Through Highways and Controlled Intersections, A. Through Highways and in accordance with Section 630-35, Schedule A, Arterial Streets and Stop Intersections, B. Stop Intersections.

Through Street: Camelot Drive

Stop Streets: Police Memorial Drive, Knights Way, Mihill Avenue

Initiator: City Engineer

A Motion was made by Ned Derksen to recommend approval of proposed Ordinance to add stop signs for Police Memorial Drive, Knights Way, and Mihill Avenue at their intersections with Camelot Drive to the City Council and seconded by Brian Kolstad, and the motion was **Passed**.

Ayes: Derksen, Foster, Goebel, Klemp, Kolstad, Wagner

Absent: Schumacher

ADJOURN

A Motion was made by Brian Kolstad to adjourn at 2:06 PM and seconded by Tony Goebel, and the motion was **Passed**.

Ayes: Derksen, Foster, Goebel, Klemp, Kolstad, Wagner

Absent: Schumacher

**ADVISORY PARKING AND TRAFFIC AGENDA
CITY OF FOND DU LAC, WISCONSIN**

Title: Audience Comments

Subject: The presiding officer shall limit comments to items noticed only on the agenda.

Initiator:

Location:

Recommendation:

**ADVISORY PARKING AND TRAFFIC AGENDA
CITY OF FOND DU LAC, WISCONSIN**

Title: This proposed Ordinance change would add parking restrictions on Scott Street east of Park Avenue.

Subject: Request to add parking restriction "Parking Prohibited at All Times" in accordance with Code of Ordinances Section 630-6 and Section 630-39, Schedule "E".

Location: Scott Street, East, Both Sides; From the east right-of-way of Park Avenue, east 90'.

Initiator: City Engineer

Initiator:

Location:

Recommendation:

ATTACHMENTS:

	File Name	Description
📎	APTB_-_E_SCOTT_ST.pdf	Memo
📎	Mailing_List_8.31.17_Scott_and_Park.pdf	Mailing List

CITY OF FOND DU LAC - Memorandum

Engineering and Traffic Division

Date: August 31, 2017

To: Advisory Parking and Traffic Board

From: Paul De Vries, P.E., City Engineer

Re: **Request to add parking restrictions on East Scott Street and North Park Avenue**

This memo and Exhibit "A, B, & C" covers agenda items listed as "A, B, & C" for the Advisory Parking & Traffic Board's August 31, 2017 meeting:

Request to add parking restriction "Parking Prohibited at All Times" in accordance with Code of Ordinances Section 630-6 and Section 630-39, Schedule "E".

Location: Scott Street, East, Both Sides; From the east right-of-way of Park Avenue, east 90'.

Location: Park Avenue, North, East Side; From the south right-of-way of Scott Street, south 50'.

Request to add parking restriction "No Parking Except for Authorized Vehicles" in accordance with Code of Ordinances Section 630-9, A.(4) and Section 630-43, Schedule "I", C. From 6:00 a.m. to 6:30 p.m. on Weekdays.

Location: Scott Street, East, South Side; From the west right-of-way of Mohawk Avenue, west 60 feet.

At the July 20, 2017 meeting, the addition of no parking on E. Scott Street and N. Park Avenue was tabled for further research. The memo from the July 20, 2017 meeting is attached for details of the original request. Below are a few additional items for review and discussion.

The current bus stop is on the N. Park Avenue side of this intersection, which could add to congestion and visibility issues. Subsequent discussions with Fond

du Lac Area Transit has led to proposing the bus stop move down E. Scott Street to Mohawk Avenue to avoid stops near the E. Scott Street and N. Park Avenue intersection all together. This is Item C on the agenda.

The proposed no parking zones on E. Scott Street are the same as proposed at the July 20, 2017 meeting. This is a requirement for a “Tabled” item to be brought back exactly in the same form. The vision triangle has been added to the map which shows that the proposed no parking zone on N. Park Avenue should be south to the first driveway. On the south side of E. Scott, you can see that a portion up to the first driveway should be no parking as well due to the vision triangle. I recommend that the no parking zone be at least up to the first driveway on the south side, although larger vehicles traveling east on E. Scott Street would benefit from the no parking zone extending past the driveway as originally proposed. For additional clarity, the new driveway locations for Kwik Trip have been added to the map. The proposed no parking zone on the north side extends to the east side of the new driveway and is appropriate for opening up the intersection.

The Engineering and Traffic Division recommends these no parking zones.

CITY OF FOND DU LAC - Memorandum

Engineering and Traffic Division

Date: July 20, 2017

To: Advisory Parking and Traffic Board

From: Paul De Vries, P.E., City Engineer

Re: Request to add parking restrictions on East Scott Street and North Park Avenue

This memo and Exhibit "A&B" covers agenda items listed as "A&B" for the Advisory Parking & Traffic Board's July 20, 2017 meeting:

Request to add parking restriction "Parking Prohibited at All Times" in accordance with Code of Ordinances Section 630-6 and Section 630-39, Schedule "E".

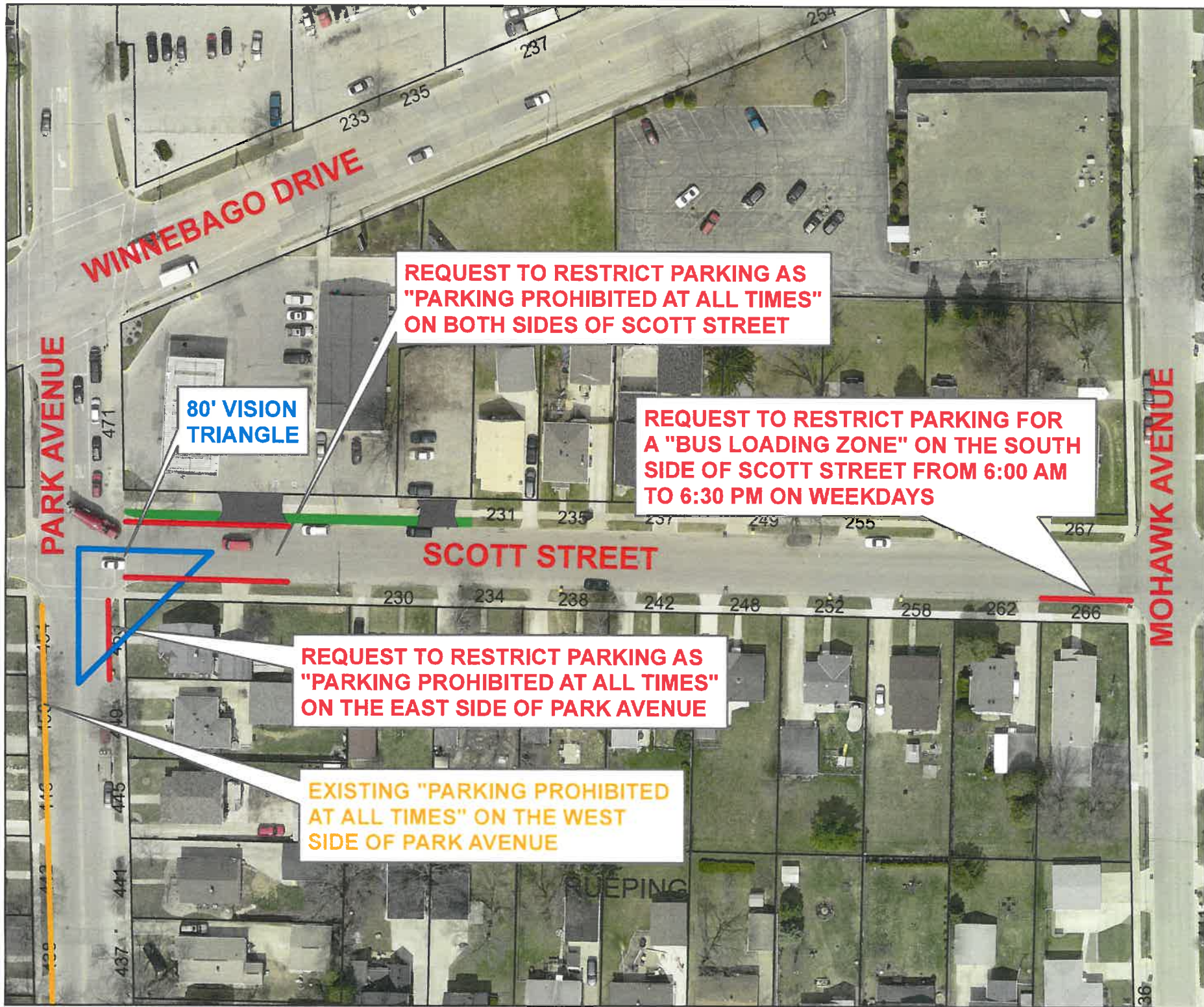
Location: Scott Street, East, Both Sides; From the east right-of-way of Park Avenue, east 90'.

Location: Park Avenue, North, East Side; From the south right-of-way of Scott Street, south 50'.

The City Engineer initiated this request after feedback from various City staff, including Transit drivers. The intersection of E. Scott Street and N. Park Avenue can be congested due to traffic volumes and the unique configuration with Winnebago Drive just to the north. In order to provide more room at the intersection along with improving traffic visibility, these are requests for no parking near the intersection.

In review of this area, along with the noted Transit routes, E. Scott Street sees increased traffic volumes from those going to and from Fond du Lac High School. The Kwik Trip site at this northeast corner has recently been improved and allows for more employee parking on-site versus on the street. Lastly, the Police Department provided accident data showing 21 crashes over the past 5 years. These no parking zones should improve the sight conditions and hopefully reduce crashes at this intersection.

The Engineering and Traffic Division recommends this no parking request.



AGENDA ITEM A, B, & C

DRAWN BY: POEVRIES DATE: 8/9/2017

ADVISORY PARKING & TRAFFIC BOARD

SCOTT & PARK - No PARKING REQUEST - AUGUST 2017



Advisory Parking Traffic
N Park Avenue E Scott Street

Parcel Number	Site Address	Mailing Address 1	Mailing City	State	Zip
FDL-15-17-11-22-255-00	242 E SCOTT ST	242 E SCOTT ST	FOND DU LAC	WI	54935
FDL-15-17-02-33-541-00	255 E SCOTT ST	255 E SCOTT ST	FOND DU LAC	WI	54935
FDL-15-17-02-34-765-00	273 E SCOTT ST	273 E SCOTT ST	FOND DU LAC	WI	54935
FDL-15-17-02-33-543-00	267 E SCOTT ST	267 E SCOTT ST	FOND DU LAC	WI	54935
FDL-15-17-11-22-259-00	453 N PARK AVE	453 N PARK AVE	FOND DU LAC	WI	54935
FDL-15-17-11-22-260-00	449 N PARK AVE	449 N PARK AVE.	FOND DU LAC	WI	54935
FDL-15-17-11-22-253-00	252 E SCOTT ST	252 E SCOTT ST	FOND DU LAC	WI	54935
FDL-15-17-11-22-283-00	434 N PARK AVE	434 N PARK AVE	FOND DU LAC	WI	54935
FDL-15-17-11-22-264-00	454 N PARK AVE	454 N PARK AVE	FOND DU LAC	WI	54935
FDL-15-17-11-22-288-00	433 N PARK AVE	433 N PARK AVE	FOND DU LAC	WI	54935
FDL-15-17-11-22-251-00	262 E SCOTT ST	262 E SCOTT ST	FOND DU LAC	WI	54935
FDL-15-17-11-22-287-00	437 N PARK AVE	N7895 FAIRFIELD DRIVE	MALONE	WI	53049
FDL-15-17-11-22-258-00	230 E SCOTT ST	230 E SCOTT ST	FOND DU LAC	WI	54935
FDL-15-17-11-22-284-00	438 N PARK AVE	438 N PARK AVE	FOND DU LAC	WI	54935
FDL-15-17-02-33-542-00	257 E SCOTT ST	257 E SCOTT ST	FOND DU LAC	WI	54935
FDL-15-17-11-22-254-00	248 E SCOTT ST	248 E SCOTT ST	FOND DU LAC	WI	54935
FDL-15-17-11-22-262-00	446 N PARK AVE	446 N PARK AVE	FOND DU LAC	WI	54935
FDL-15-17-11-22-252-00	258 E SCOTT ST	310 WILSON DR	FOND DU LAC	WI	54935
FDL-15-17-11-22-286-00	441 N PARK AVE	441 N PARK AVE	FOND DU LAC	WI	54935
FDL-15-17-11-22-263-00	450 N PARK AVE	450 N PARK AVE	FOND DU LAC	WI	54935
FDL-15-17-02-33-538-00	235 E SCOTT ST	235 E SCOTT ST	FOND DU LAC	WI	54935
FDL-15-17-11-22-261-00	445 N PARK AVE	445 N PARK AVE	FOND DU LAC	WI	54935
FDL-15-17-11-22-256-00	238 E SCOTT ST	238 E SCOTT ST	FOND DU LAC	WI	54935
FDL-15-17-11-21-024-00	276 E SCOTT ST	276 E SCOTT ST	FOND DU LAC	WI	54935
FDL-15-17-02-33-540-00	249 E SCOTT ST	249 E SCOTT ST	FOND DU LAC	WI	54935
FDL-15-17-11-22-285-00	442 N PARK AVE	N6598 LOEHR RD	FOND DU LAC	WI	54937
FDL-15-17-11-22-257-00	234 E SCOTT ST	234 E SCOTT ST	FOND DU LAC	WI	54935
FDL-15-17-02-33-539-00	237 E SCOTT ST	237 E SCOTT ST	FOND DU LAC	WI	54935
FDL-15-17-11-22-250-00	266 E SCOTT ST	266 E SCOTT ST	FOND DU LAC	WI	54935
FDL-15-17-02-33-536-00	227 E SCOTT ST	1626 OAK ST	LA CROSSE	WI	54603
FDL-15-17-02-33-535-00	471 N PARK AVE	1626 OAK ST	LA CROSSE	WI	54601

**ADVISORY PARKING AND TRAFFIC AGENDA
CITY OF FOND DU LAC, WISCONSIN**

Title: This proposed Ordinance change would add parking restrictions on Park Avenue south of Scott Street.

Subject: Request to add parking restriction "Parking Prohibited at All Times" in accordance with Code of Ordinances Section 630-6 and Section 630-39, Schedule "E".

Location: Park Avenue, North, East Side; From the south right-of-way of Scott Street, south 50'.

Initiator: City Engineer

Initiator:

Location:

Recommendation:

ATTACHMENTS:

	File Name	Description
📎	APTB_-_E_SCOTT_ST.pdf	Memo
📎	Mailing_List_8.31.17_Scott_and_Park.pdf	Mailing List

CITY OF FOND DU LAC - Memorandum

Engineering and Traffic Division

Date: August 31, 2017

To: Advisory Parking and Traffic Board

From: Paul De Vries, P.E., City Engineer

Re: **Request to add parking restrictions on East Scott Street and North Park Avenue**

This memo and Exhibit "A, B, & C" covers agenda items listed as "A, B, & C" for the Advisory Parking & Traffic Board's August 31, 2017 meeting:

Request to add parking restriction "Parking Prohibited at All Times" in accordance with Code of Ordinances Section 630-6 and Section 630-39, Schedule "E".

Location: Scott Street, East, Both Sides; From the east right-of-way of Park Avenue, east 90'.

Location: Park Avenue, North, East Side; From the south right-of-way of Scott Street, south 50'.

Request to add parking restriction "No Parking Except for Authorized Vehicles" in accordance with Code of Ordinances Section 630-9, A.(4) and Section 630-43, Schedule "I", C. From 6:00 a.m. to 6:30 p.m. on Weekdays.

Location: Scott Street, East, South Side; From the west right-of-way of Mohawk Avenue, west 60 feet.

At the July 20, 2017 meeting, the addition of no parking on E. Scott Street and N. Park Avenue was tabled for further research. The memo from the July 20, 2017 meeting is attached for details of the original request. Below are a few additional items for review and discussion.

The current bus stop is on the N. Park Avenue side of this intersection, which could add to congestion and visibility issues. Subsequent discussions with Fond

du Lac Area Transit has led to proposing the bus stop move down E. Scott Street to Mohawk Avenue to avoid stops near the E. Scott Street and N. Park Avenue intersection all together. This is Item C on the agenda.

The proposed no parking zones on E. Scott Street are the same as proposed at the July 20, 2017 meeting. This is a requirement for a “Tabled” item to be brought back exactly in the same form. The vision triangle has been added to the map which shows that the proposed no parking zone on N. Park Avenue should be south to the first driveway. On the south side of E. Scott, you can see that a portion up to the first driveway should be no parking as well due to the vision triangle. I recommend that the no parking zone be at least up to the first driveway on the south side, although larger vehicles traveling east on E. Scott Street would benefit from the no parking zone extending past the driveway as originally proposed. For additional clarity, the new driveway locations for Kwik Trip have been added to the map. The proposed no parking zone on the north side extends to the east side of the new driveway and is appropriate for opening up the intersection.

The Engineering and Traffic Division recommends these no parking zones.

CITY OF FOND DU LAC - Memorandum

Engineering and Traffic Division

Date: July 20, 2017

To: Advisory Parking and Traffic Board

From: Paul De Vries, P.E., City Engineer

Re: **Request to add parking restrictions on East Scott Street and North Park Avenue**

This memo and Exhibit "A&B" covers agenda items listed as "A&B" for the Advisory Parking & Traffic Board's July 20, 2017 meeting:

Request to add parking restriction "Parking Prohibited at All Times" in accordance with Code of Ordinances Section 630-6 and Section 630-39, Schedule "E".

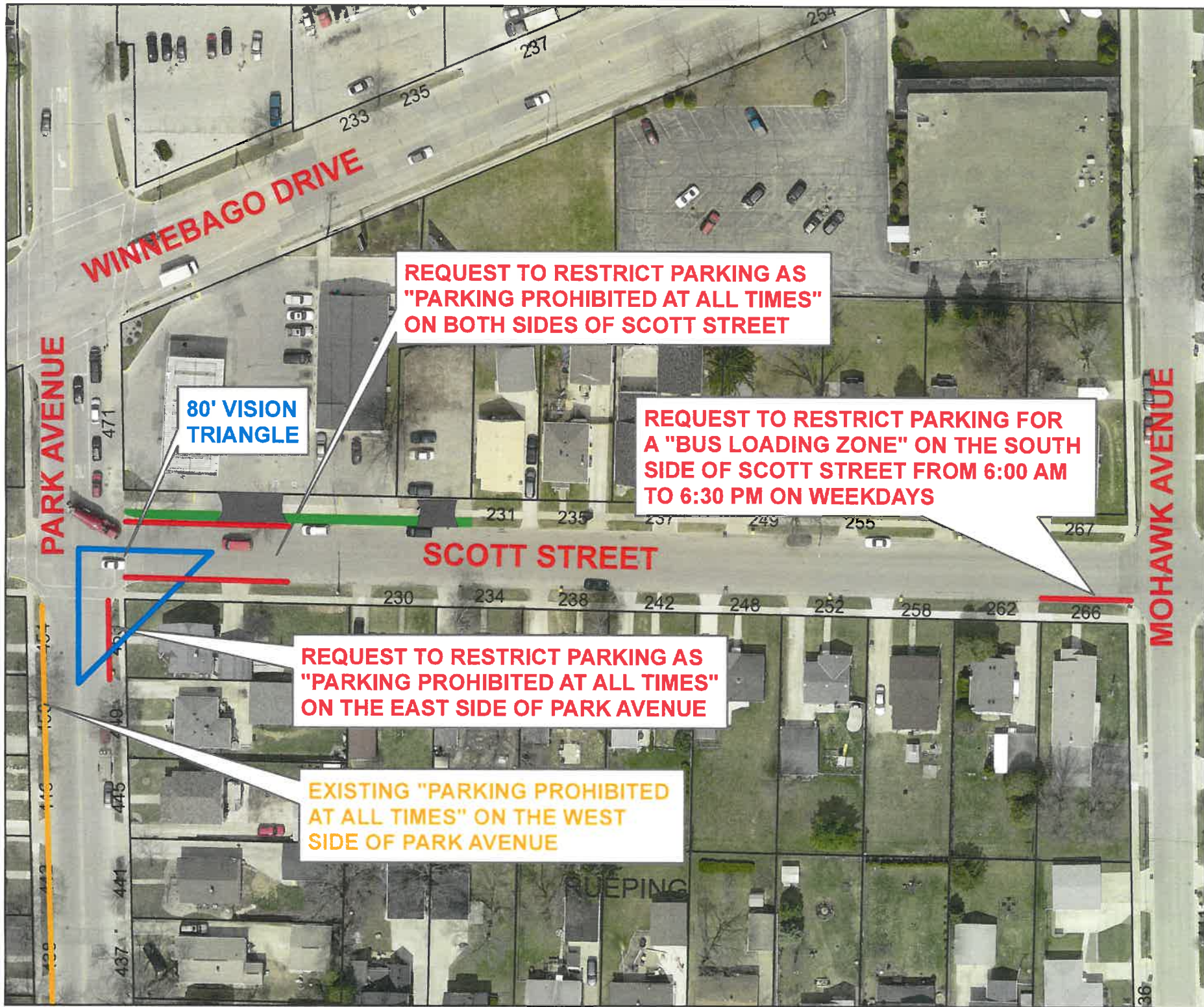
Location: Scott Street, East, Both Sides; From the east right-of-way of Park Avenue, east 90'.

Location: Park Avenue, North, East Side; From the south right-of-way of Scott Street, south 50'.

The City Engineer initiated this request after feedback from various City staff, including Transit drivers. The intersection of E. Scott Street and N. Park Avenue can be congested due to traffic volumes and the unique configuration with Winnebago Drive just to the north. In order to provide more room at the intersection along with improving traffic visibility, these are requests for no parking near the intersection.

In review of this area, along with the noted Transit routes, E. Scott Street sees increased traffic volumes from those going to and from Fond du Lac High School. The Kwik Trip site at this northeast corner has recently been improved and allows for more employee parking on-site versus on the street. Lastly, the Police Department provided accident data showing 21 crashes over the past 5 years. These no parking zones should improve the sight conditions and hopefully reduce crashes at this intersection.

The Engineering and Traffic Division recommends this no parking request.



1 IN = 75 FT

AGENDA ITEM A, B, & C

DRAWN BY: POEVRIES DATE: 8/9/2017

ADVISORY PARKING & TRAFFIC BOARD

SCOTT & PARK - NO PARKING REQUEST - AUGUST 2017



Advisory Parking Traffic
N Park Avenue E Scott Street

Parcel Number	Site Address	Mailing Address 1	Mailing City	State	Zip
FDL-15-17-11-22-255-00	242 E SCOTT ST	242 E SCOTT ST	FOND DU LAC	WI	54935
FDL-15-17-02-33-541-00	255 E SCOTT ST	255 E SCOTT ST	FOND DU LAC	WI	54935
FDL-15-17-02-34-765-00	273 E SCOTT ST	273 E SCOTT ST	FOND DU LAC	WI	54935
FDL-15-17-02-33-543-00	267 E SCOTT ST	267 E SCOTT ST	FOND DU LAC	WI	54935
FDL-15-17-11-22-259-00	453 N PARK AVE	453 N PARK AVE	FOND DU LAC	WI	54935
FDL-15-17-11-22-260-00	449 N PARK AVE	449 N PARK AVE.	FOND DU LAC	WI	54935
FDL-15-17-11-22-253-00	252 E SCOTT ST	252 E SCOTT ST	FOND DU LAC	WI	54935
FDL-15-17-11-22-283-00	434 N PARK AVE	434 N PARK AVE	FOND DU LAC	WI	54935
FDL-15-17-11-22-264-00	454 N PARK AVE	454 N PARK AVE	FOND DU LAC	WI	54935
FDL-15-17-11-22-288-00	433 N PARK AVE	433 N PARK AVE	FOND DU LAC	WI	54935
FDL-15-17-11-22-251-00	262 E SCOTT ST	262 E SCOTT ST	FOND DU LAC	WI	54935
FDL-15-17-11-22-287-00	437 N PARK AVE	N7895 FAIRFIELD DRIVE	MALONE	WI	53049
FDL-15-17-11-22-258-00	230 E SCOTT ST	230 E SCOTT ST	FOND DU LAC	WI	54935
FDL-15-17-11-22-284-00	438 N PARK AVE	438 N PARK AVE	FOND DU LAC	WI	54935
FDL-15-17-02-33-542-00	257 E SCOTT ST	257 E SCOTT ST	FOND DU LAC	WI	54935
FDL-15-17-11-22-254-00	248 E SCOTT ST	248 E SCOTT ST	FOND DU LAC	WI	54935
FDL-15-17-11-22-262-00	446 N PARK AVE	446 N PARK AVE	FOND DU LAC	WI	54935
FDL-15-17-11-22-252-00	258 E SCOTT ST	310 WILSON DR	FOND DU LAC	WI	54935
FDL-15-17-11-22-286-00	441 N PARK AVE	441 N PARK AVE	FOND DU LAC	WI	54935
FDL-15-17-11-22-263-00	450 N PARK AVE	450 N PARK AVE	FOND DU LAC	WI	54935
FDL-15-17-02-33-538-00	235 E SCOTT ST	235 E SCOTT ST	FOND DU LAC	WI	54935
FDL-15-17-11-22-261-00	445 N PARK AVE	445 N PARK AVE	FOND DU LAC	WI	54935
FDL-15-17-11-22-256-00	238 E SCOTT ST	238 E SCOTT ST	FOND DU LAC	WI	54935
FDL-15-17-11-21-024-00	276 E SCOTT ST	276 E SCOTT ST	FOND DU LAC	WI	54935
FDL-15-17-02-33-540-00	249 E SCOTT ST	249 E SCOTT ST	FOND DU LAC	WI	54935
FDL-15-17-11-22-285-00	442 N PARK AVE	N6598 LOEHR RD	FOND DU LAC	WI	54937
FDL-15-17-11-22-257-00	234 E SCOTT ST	234 E SCOTT ST	FOND DU LAC	WI	54935
FDL-15-17-02-33-539-00	237 E SCOTT ST	237 E SCOTT ST	FOND DU LAC	WI	54935
FDL-15-17-11-22-250-00	266 E SCOTT ST	266 E SCOTT ST	FOND DU LAC	WI	54935
FDL-15-17-02-33-536-00	227 E SCOTT ST	1626 OAK ST	LA CROSSE	WI	54603
FDL-15-17-02-33-535-00	471 N PARK AVE	1626 OAK ST	LA CROSSE	WI	54601

**ADVISORY PARKING AND TRAFFIC AGENDA
CITY OF FOND DU LAC, WISCONSIN**

Title: This proposed Ordinance change would add a Bus Loading Zone on the south side of Scott Street west of Mohawk Avenue.

Subject: Request to add parking restriction "No Parking Except for Authorized Vehicles" in accordance with Code of Ordinances Section 630-9, A.(4) and Section 630-43, Schedule "I", C. From 6:00 a.m. to 6:30 p.m. on Weekdays.

Location: Scott Street, East, South Side; From the west right-of-way of Mohawk Avenue, west 60 feet.

Initiator: City Engineer

Initiator:

Location:

Recommendation:

ATTACHMENTS:

	File Name	Description
📎	APTB_-_E_SCOTT_ST.pdf	Memo
📎	Mailing_List_8.31.17_Scott_and_Park.pdf	Mailing List

CITY OF FOND DU LAC - Memorandum

Engineering and Traffic Division

Date: August 31, 2017

To: Advisory Parking and Traffic Board

From: Paul De Vries, P.E., City Engineer

Re: **Request to add parking restrictions on East Scott Street and North Park Avenue**

This memo and Exhibit "A, B, & C" covers agenda items listed as "A, B, & C" for the Advisory Parking & Traffic Board's August 31, 2017 meeting:

Request to add parking restriction "Parking Prohibited at All Times" in accordance with Code of Ordinances Section 630-6 and Section 630-39, Schedule "E".

Location: Scott Street, East, Both Sides; From the east right-of-way of Park Avenue, east 90'.

Location: Park Avenue, North, East Side; From the south right-of-way of Scott Street, south 50'.

Request to add parking restriction "No Parking Except for Authorized Vehicles" in accordance with Code of Ordinances Section 630-9, A.(4) and Section 630-43, Schedule "I", C. From 6:00 a.m. to 6:30 p.m. on Weekdays.

Location: Scott Street, East, South Side; From the west right-of-way of Mohawk Avenue, west 60 feet.

At the July 20, 2017 meeting, the addition of no parking on E. Scott Street and N. Park Avenue was tabled for further research. The memo from the July 20, 2017 meeting is attached for details of the original request. Below are a few additional items for review and discussion.

The current bus stop is on the N. Park Avenue side of this intersection, which could add to congestion and visibility issues. Subsequent discussions with Fond

du Lac Area Transit has led to proposing the bus stop move down E. Scott Street to Mohawk Avenue to avoid stops near the E. Scott Street and N. Park Avenue intersection all together. This is Item C on the agenda.

The proposed no parking zones on E. Scott Street are the same as proposed at the July 20, 2017 meeting. This is a requirement for a “Tabled” item to be brought back exactly in the same form. The vision triangle has been added to the map which shows that the proposed no parking zone on N. Park Avenue should be south to the first driveway. On the south side of E. Scott, you can see that a portion up to the first driveway should be no parking as well due to the vision triangle. I recommend that the no parking zone be at least up to the first driveway on the south side, although larger vehicles traveling east on E. Scott Street would benefit from the no parking zone extending past the driveway as originally proposed. For additional clarity, the new driveway locations for Kwik Trip have been added to the map. The proposed no parking zone on the north side extends to the east side of the new driveway and is appropriate for opening up the intersection.

The Engineering and Traffic Division recommends these no parking zones.

CITY OF FOND DU LAC - Memorandum

Engineering and Traffic Division

Date: July 20, 2017

To: Advisory Parking and Traffic Board

From: Paul De Vries, P.E., City Engineer

Re: Request to add parking restrictions on East Scott Street and North Park Avenue

This memo and Exhibit "A&B" covers agenda items listed as "A&B" for the Advisory Parking & Traffic Board's July 20, 2017 meeting:

Request to add parking restriction "Parking Prohibited at All Times" in accordance with Code of Ordinances Section 630-6 and Section 630-39, Schedule "E".

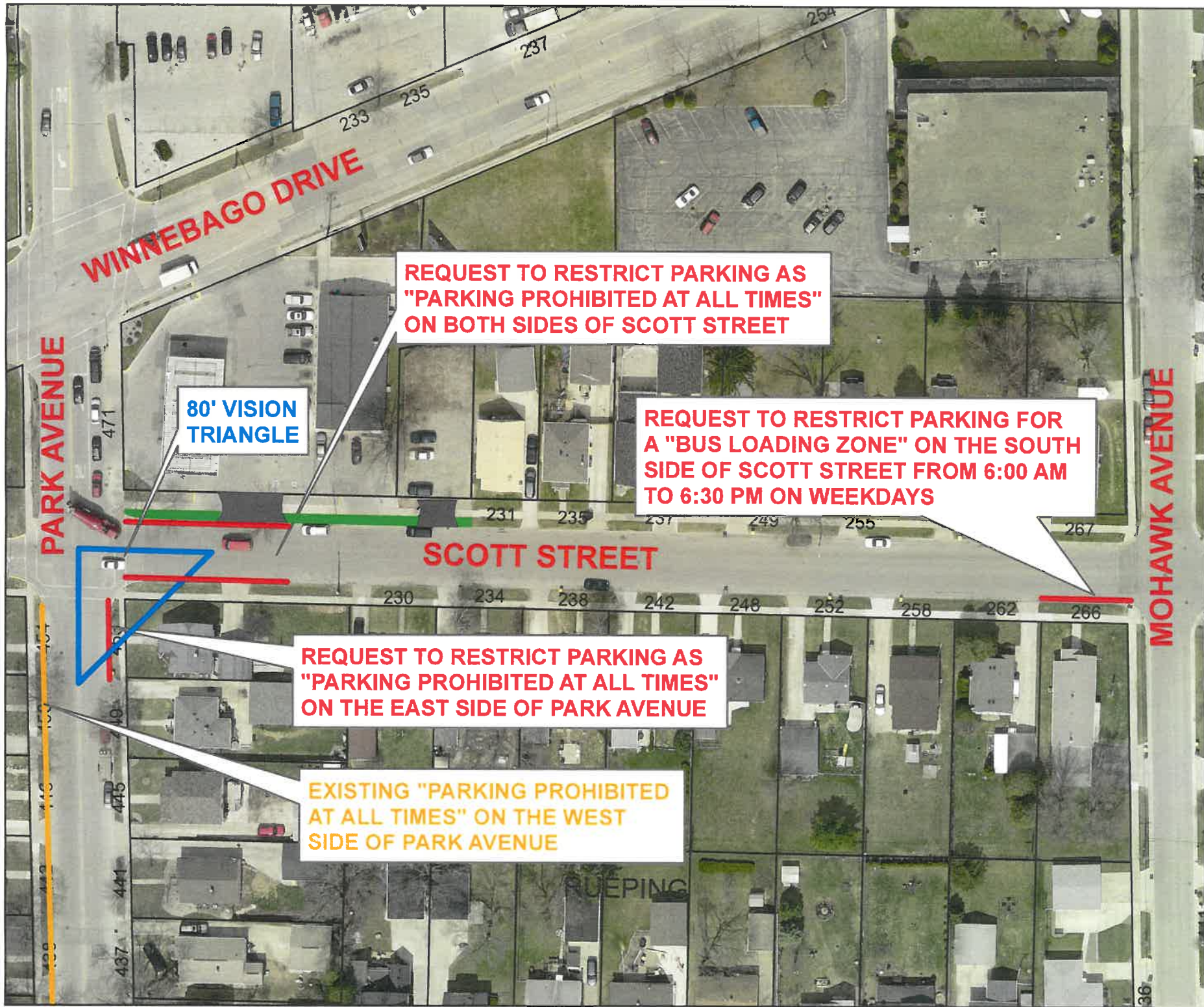
Location: Scott Street, East, Both Sides; From the east right-of-way of Park Avenue, east 90'.

Location: Park Avenue, North, East Side; From the south right-of-way of Scott Street, south 50'.

The City Engineer initiated this request after feedback from various City staff, including Transit drivers. The intersection of E. Scott Street and N. Park Avenue can be congested due to traffic volumes and the unique configuration with Winnebago Drive just to the north. In order to provide more room at the intersection along with improving traffic visibility, these are requests for no parking near the intersection.

In review of this area, along with the noted Transit routes, E. Scott Street sees increased traffic volumes from those going to and from Fond du Lac High School. The Kwik Trip site at this northeast corner has recently been improved and allows for more employee parking on-site versus on the street. Lastly, the Police Department provided accident data showing 21 crashes over the past 5 years. These no parking zones should improve the sight conditions and hopefully reduce crashes at this intersection.

The Engineering and Traffic Division recommends this no parking request.



1 IN = 75 FT

AGENDA ITEM A, B, & C

DRAWN BY: POEVRIES DATE: 8/9/2017

ADVISORY PARKING & TRAFFIC BOARD

SCOTT & PARK - NO PARKING REQUEST - AUGUST 2017



Advisory Parking Traffic
N Park Avenue E Scott Street

Parcel Number	Site Address	Mailing Address 1	Mailing City	State	Zip
FDL-15-17-11-22-255-00	242 E SCOTT ST	242 E SCOTT ST	FOND DU LAC	WI	54935
FDL-15-17-02-33-541-00	255 E SCOTT ST	255 E SCOTT ST	FOND DU LAC	WI	54935
FDL-15-17-02-34-765-00	273 E SCOTT ST	273 E SCOTT ST	FOND DU LAC	WI	54935
FDL-15-17-02-33-543-00	267 E SCOTT ST	267 E SCOTT ST	FOND DU LAC	WI	54935
FDL-15-17-11-22-259-00	453 N PARK AVE	453 N PARK AVE	FOND DU LAC	WI	54935
FDL-15-17-11-22-260-00	449 N PARK AVE	449 N PARK AVE.	FOND DU LAC	WI	54935
FDL-15-17-11-22-253-00	252 E SCOTT ST	252 E SCOTT ST	FOND DU LAC	WI	54935
FDL-15-17-11-22-283-00	434 N PARK AVE	434 N PARK AVE	FOND DU LAC	WI	54935
FDL-15-17-11-22-264-00	454 N PARK AVE	454 N PARK AVE	FOND DU LAC	WI	54935
FDL-15-17-11-22-288-00	433 N PARK AVE	433 N PARK AVE	FOND DU LAC	WI	54935
FDL-15-17-11-22-251-00	262 E SCOTT ST	262 E SCOTT ST	FOND DU LAC	WI	54935
FDL-15-17-11-22-287-00	437 N PARK AVE	N7895 FAIRFIELD DRIVE	MALONE	WI	53049
FDL-15-17-11-22-258-00	230 E SCOTT ST	230 E SCOTT ST	FOND DU LAC	WI	54935
FDL-15-17-11-22-284-00	438 N PARK AVE	438 N PARK AVE	FOND DU LAC	WI	54935
FDL-15-17-02-33-542-00	257 E SCOTT ST	257 E SCOTT ST	FOND DU LAC	WI	54935
FDL-15-17-11-22-254-00	248 E SCOTT ST	248 E SCOTT ST	FOND DU LAC	WI	54935
FDL-15-17-11-22-262-00	446 N PARK AVE	446 N PARK AVE	FOND DU LAC	WI	54935
FDL-15-17-11-22-252-00	258 E SCOTT ST	310 WILSON DR	FOND DU LAC	WI	54935
FDL-15-17-11-22-286-00	441 N PARK AVE	441 N PARK AVE	FOND DU LAC	WI	54935
FDL-15-17-11-22-263-00	450 N PARK AVE	450 N PARK AVE	FOND DU LAC	WI	54935
FDL-15-17-02-33-538-00	235 E SCOTT ST	235 E SCOTT ST	FOND DU LAC	WI	54935
FDL-15-17-11-22-261-00	445 N PARK AVE	445 N PARK AVE	FOND DU LAC	WI	54935
FDL-15-17-11-22-256-00	238 E SCOTT ST	238 E SCOTT ST	FOND DU LAC	WI	54935
FDL-15-17-11-21-024-00	276 E SCOTT ST	276 E SCOTT ST	FOND DU LAC	WI	54935
FDL-15-17-02-33-540-00	249 E SCOTT ST	249 E SCOTT ST	FOND DU LAC	WI	54935
FDL-15-17-11-22-285-00	442 N PARK AVE	N6598 LOEHR RD	FOND DU LAC	WI	54937
FDL-15-17-11-22-257-00	234 E SCOTT ST	234 E SCOTT ST	FOND DU LAC	WI	54935
FDL-15-17-02-33-539-00	237 E SCOTT ST	237 E SCOTT ST	FOND DU LAC	WI	54935
FDL-15-17-11-22-250-00	266 E SCOTT ST	266 E SCOTT ST	FOND DU LAC	WI	54935
FDL-15-17-02-33-536-00	227 E SCOTT ST	1626 OAK ST	LA CROSSE	WI	54603
FDL-15-17-02-33-535-00	471 N PARK AVE	1626 OAK ST	LA CROSSE	WI	54601

**ADVISORY PARKING AND TRAFFIC AGENDA
CITY OF FOND DU LAC, WISCONSIN**

Title: This proposed Ordinance removes a 2-hour limited time parking restriction on Forest Avenue between Military Road and Brooke Street.

Subject: Request to remove parking restriction "Limited Time Parking" in accordance with Code of Ordinances Section 630-10 and Section 630-44, Schedule "J", D. Two Hours (10) From 8:00 a.m. to 5:00 p.m., except Sundays.

Location: Forest Avenue, Both Sides; Between South Military Road and the Chicago & Northwestern Railroad Company tracks.

Initiator: Edward Schneider, 151 Forest Avenue

Initiator:

Location:

Recommendation:

ATTACHMENTS:

	File Name	Description
📎	APTB_-_FOREST_AVE.pdf	Memo
📎	Mailing_List_8.31.17_Forest_Ave.pdf	Mailing List

CITY OF FOND DU LAC - Memorandum

Engineering and Traffic Division

Date: August 31, 2017

To: Advisory Parking and Traffic Board

From: Paul De Vries, P.E., City Engineer

Re: Request to remove a 2-hour limited time parking restriction on Forest Avenue between Military Road and Brooke Street

This memo and Exhibit "D" covers agenda item listed as "D" for the Advisory Parking & Traffic Board's August 31, 2017 meeting:

Request to remove parking restriction "Limited Time Parking" in accordance with Code of Ordinances Section 630-10 and Section 630-44, Schedule "J", D. Two Hours (10) From 8:00 a.m. to 5:00 p.m., except Sundays.

Location: Forest Avenue, Both Sides; Between South Military Road and the Chicago & Northwestern Railroad Company tracks.

Edward Schneider, as owner of 151 Forest Avenue, initiated this request. As he notes in his letter, the 2-hour parking restriction has not always been enforced according to his knowledge. His intention would be to open up parking on Forest Avenue for his tenants and others in the area without a time limit.

In my review of this request, the restrictions have been in place for almost 40 years. Since then, there has been various land use changes and Forest Avenue was widened to 42 feet wide. This width supports on street parking and the traffic volume.

The Engineering and Traffic Division does not object to this request.

June 30, 2017

Sent Via Email to:
pdevries@fdl.wi.gov

Mr. Paul Devries
City Engineer
160 S. Macy St.
Fond du Lac, WI 54935

RE: 151 Forest Ave, Parking Sign

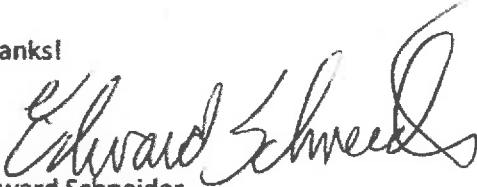
Dear Mr. DeVries:

I have owned a rental property at 151 Forest Ave., Fond du Lac, for many years. Recently a 2 hour parking restriction has been enforced a couple of times resulting in a ticket for my residents. This has brought my attention to the 2 hour parking in front of our property and across the street that has never been enforced to my knowledge during our 30 plus years of ownership. I am not sure when the sign even appeared, but they have always been ignored.

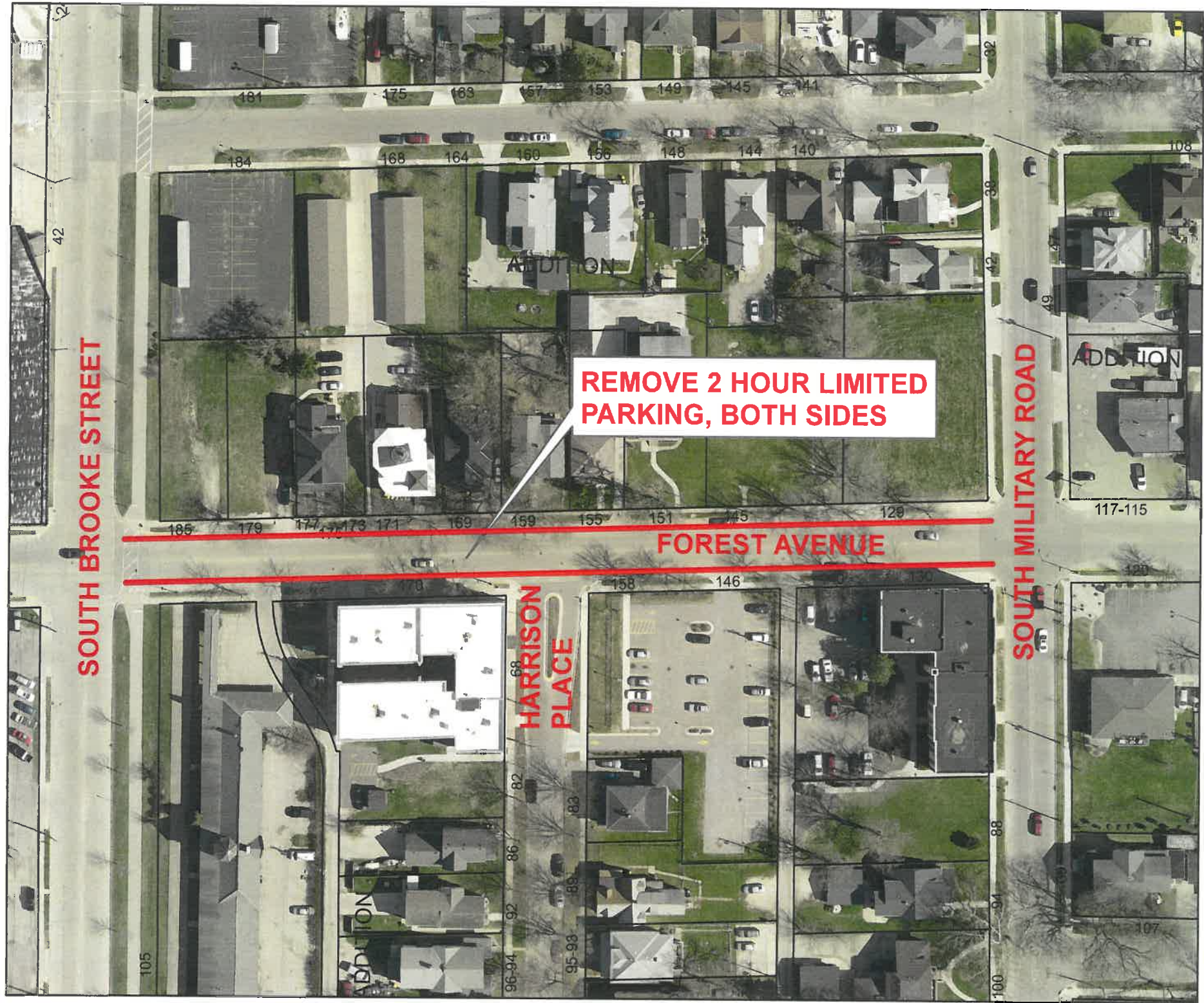
My tenant has had contact with a police captain and there were no objections on his part to requesting the signs be removed. So, therefore, I request that the need for this 2 hour parking restriction be examined and if no compelling objections are made, that they be removed.

If you have any questions, you may reach me at 920-948-9303.

Thanks!

A handwritten signature in black ink, appearing to read "Edward Schneider". The signature is fluid and cursive, with a large, stylized "E" and "S".

Edward Schneider
N5048 County Rd K
Fond du Lac, WI 54937



ADVISORY PARKING & TRAFFIC BOARD

FOREST AVENUE - PARKING REVISIONS - AUG. 2017

AGENDA ITEM D

DRAWN BY: PDEVRIES DATE: 8/9/2017



Advisory Parking Traffic
Forest Avenue

Parcel Number	Site Address	Mailing Address 1	Mailing City	State	Zip
FDL-15-17-15-21-037-00	212 FOREST AVE	212 FOREST AVE	FOND DU LAC	WI	54935
FDL-15-17-10-34-827-00	171 FOREST AVE	192 N NATIONAL AVE	FOND DU LAC	WI	54935
FDL-15-17-10-34-830-00	185 FOREST AVE	PO BOX 150	FOND DU LAC	WI	54936
FDL-15-17-10-34-829-00	179 FOREST AVE	P O BOX 150	FOND DU LAC	WI	54936
FDL-15-17-15-21-022-01	158 FOREST AVE	15 N MARR ST	FOND DU LAC	WI	54935
FDL-15-17-15-21-024-01	84 HARRISON PL	15 N MARR ST	FOND DU LAC	WI	54935
FDL-15-17-10-34-787-00	42 S BROOKE ST	9 SHEBOYGAN ST	FOND DU LAC	WI	54935
FDL-15-17-10-34-826-00	169 FOREST AVE	923 SOUTH MAIN ST STE E	OSHKOSH	WI	54902
FDL-15-17-15-12-330-00	120 FOREST AVE	120 FOREST AVE	FOND DU LAC	WI	54935
FDL-15-17-10-34-828-00	177 FOREST AVE	7138 W MOLTKE	MILWAUKEE	WI	53210
FDL-15-17-15-21-036-00	105 S BROOKE ST	105 S BROOKE ST	FOND DU LAC	WI	54935
FDL-15-17-15-21-001-00	130 FOREST AVE	PO BOX 1392	FOND DU LAC	WI	54936
FDL-15-17-10-34-822-00	145 FOREST AVE	PO BOX 2221	FOND DU LAC	WI	54936
FDL-15-17-10-34-825-00	159 FOREST AVE	160 S MACY ST	FOND DU LAC	WI	54935
FDL-15-17-10-34-821-00	129 FOREST AVE	PO BOX 150	FOND DU LAC	WI	54936
FDL-15-17-10-34-823-00	151 FOREST AVE	N5038 COUNTY ROAD K	FOND DU LAC	WI	54937
FDL-15-17-10-34-824-00	155 FOREST AVE	747 CRESTVIEW LN	FOND DU LAC	WI	54935
FDL-15-17-10-43-608-00	117 FOREST AVE	117 FOREST AVE	FOND DU LAC	WI	54935

**ADVISORY PARKING AND TRAFFIC AGENDA
CITY OF FOND DU LAC, WISCONSIN**

Title: This proposed Ordinance removes metered parking and adds a 2-hour restriction on Western Avenue between Macy Street and Main Street along with cleaning up various conflicting parking restrictions in the Ordinances.

Subject: Request to add parking restriction "Limited Time Parking" in accordance with Code of Ordinances Section 630-10 and Section 630-44, Schedule "J", D. Two Hours (12) From 8:00 a.m. to 6:00 p.m. daily, except Saturdays and Sundays.

Location: Western Avenue, North Side; From a point 62 feet east of the east right-of-way of Macy Street, east 80 feet.

Location: Western Avenue, South Side; From a point 53 feet east of the east right-of-way of Macy Street, east 64 feet.

Request to add parking restriction "Parking Prohibited at All Times" in accordance with Code of Ordinances Section 630-6 and Section 630-39, Schedule "E".

Location: Western Avenue, Both Sides; Between Macy Street and South Main Street except for designated 2-hour limited time parking.

Request to remove parking restriction "Limited Time Parking" in accordance with Code of Ordinances Section 630-10 and Section 630-44, Schedule "J", C. Sixty Minutes (8) Between 8:00 a.m. and 6:00 p.m., except Sundays and legal holidays.

Location: Western Avenue, Both Sides; Between Main Street and Court Street.

Request to remove parking restriction "No Parking Except for Authorized Vehicles" in accordance with Code of Ordinances Section 630-9, A.(1) and Section 630-42, Schedule "H".

Location: Western Avenue, South Side; From a point 46 feet west of the west curbline of South Main Street, west 26 feet.

Request to remove parking restriction "Parking Prohibited at All Times" in accordance with Code of Ordinances Section 630-6 and Section 630-39, Schedule "E".

Location: Western Avenue, North Side; From the west curbline of South Main Street, west 88 feet.

Location: Western Avenue, South Side; From the west curbline of South Main Street, west 120 feet.

Request to remove parking restriction "Parking, Standing, or Stopping Prohibited" in accordance with Code of Ordinances Section 630-6 and Section 630-41, Schedule "G".

Location: Western Avenue, North Side; From the east curbline of South Macy Street easterly 62 feet.

Location: Western Avenue, South Side; From the east curbline of Linden Street easterly 53 feet.

Initiator: Community Development Director

Initiator:

Location:

Recommendation:

ATTACHMENTS:

	File Name	Description
	APTB_-_WESTERN_AVE.pdf	Memo
	Mailing_List_8.31.17_Western.pdf	Mailing List

CITY OF FOND DU LAC - Memorandum

Engineering and Traffic Division

Date: August 31, 2017

To: Advisory Parking and Traffic Board

From: Paul De Vries, P.E., City Engineer

Re: **Request to remove metered parking on stalls and replaced with a 2-hour restriction on Western Avenue between S. Main Street and S. Macy Street**

This memo and Exhibit "E" covers agenda item listed as "E" for the Advisory Parking & Traffic Board's August 31, 2017 meeting:

Request to add parking restriction "Limited Time Parking" in accordance with Code of Ordinances Section 630-10 and Section 630-44, Schedule "J", D. Two Hours (12) From 8:00 a.m. to 6:00 p.m. daily, except Saturdays and Sundays.

Location: Western Avenue, North Side; From a point 62 feet east of the east right-of-way of Macy Street, east 80 feet.

Location: Western Avenue, South Side; From a point 53 feet east of the east right-of-way of Macy Street, east 64 feet.

Request to add parking restriction "Parking Prohibited at All Times" in accordance with Code of Ordinances Section 630-6 and Section 630-39, Schedule "E".

Location: Western Avenue, Both Sides; Between Macy Street and South Main Street except for designated 2-hour limited time parking.

Request to remove parking restriction "Limited Time Parking" in accordance with Code of Ordinances Section 630-10 and Section 630-44, Schedule "J", C. Sixty Minutes (8) Between 8:00 a.m. and 6:00 p.m., except Sundays and legal holidays.

Location: Western Avenue, Both Sides; Between Main Street and Court Street.

Request to remove parking restriction “No Parking Except for Authorized Vehicles” in accordance with Code of Ordinances Section 630-9, A.(1) and Section 630-42, Schedule “H”.

Location: Western Avenue, South Side; From a point 46 feet west of the west curbline of South Main Street, west 26 feet.

Request to remove parking restriction “Parking Prohibited at All Times” in accordance with Code of Ordinances Section 630-6 and Section 630-39, Schedule “E”.

Location: Western Avenue, North Side; From the west curbline of South Main Street, west 88 feet.

Location: Western Avenue, South Side; From the west curbline of South Main Street, west 120 feet.

Request to remove parking restriction “Parking, Standing, or Stopping Prohibited” in accordance with Code of Ordinances Section 630-6 and Section 630-41, Schedule “G”.

Location: Western Avenue, North Side; From the east curbline of South Macy Street easterly 62 feet.

Location: Western Avenue, South Side; From the east curbline of Linden Street easterly 53 feet.

The Community Development Director initiated this request following discussions with local business and property owners. The attached memo details the request and it indicates the revenue from these meters is not significant. A 2-hour restriction is requested to remain once the meters would be removed.

My review of restrictions in this short block revealed multiple types and lengths, none of which really matches up with any existing signage and parking stalls. I prepared the agenda items to remove all current restrictions in the code and replaced them with the 2-hour zone in the parking stalls and then parking prohibited at all times for the rest of the block on both sides.

The Engineering and Traffic Division supports the parking restriction changes.

CITY OF FOND DU LAC - Memorandum

Department of Community Development

Date: August 9, 2016

To: Paul DeVries, City Engineer

From: Dyann Benson, Community Development Director

Re: Western Avenue – Macy Street to Main Street – 2 Hour Parking

The City has received a request to remove the parking meters along Western Avenue between Macy Street and Main Street. The meters do not generate a significant amount of revenue and are typically used only by clients or employees utilizing the businesses on the south side of Western Avenue. The request is for removal of the meters from both sides of the street in this area.

The 2 hour parking restriction is based upon the presence of the parking meters. There are no other parking signage posted identifying any parking restrictions. Due to the location of businesses in the area, it would be appropriate to continue the 2 hour parking limitation in this area.

Staff is requesting consideration by the Advisory Parking & Traffic to approve a 2 hour parking limitation from 8:00 am to 6:00 pm, excluding Saturday and Sundays.



ADVISORY PARKING & TRAFFIC BOARD

WESTERN AVENUE PARKING REVISIONS - AUG 2017

AGENDA ITEM E

DRAWN BY: PDEVRIES DATE: 8/9/2017



1" IN = 50 FT

Advisory Parking Traffic
Western Avenue

Parcel Number	Site Address	Mailing Address 1	Mailing City	State	Zip
FDL-15-17-15-13-502-00	209 S MAIN ST	N8252 ASHBERRY AVE	FOND DU LAC	WI	54935
FDL-15-17-15-12-294-00	197 S MAIN ST	PO BOX 150	FOND DU LAC	WI	54936
FDL-15-17-15-12-295-00	199 S MAIN ST	PO BOX 150	FOND DU LAC	WI	54936
FDL-15-17-15-13-500-00	203 S MAIN ST	PO BOX 150	FOND DU LAC	WI	54936
FDL-15-17-15-13-501-00	205 S MAIN ST	PO BOX 150	FOND DU LAC	WI	54936
FDL-15-17-15-12-296-00	190 S MAIN ST	160 S MACY ST	FOND DU LAC	WI	54935
FDL-15-17-15-13-543-01	229 LINDEN ST	910 COUNTRY CLUB LN	FOND DU LAC	WI	54935
FDL-15-17-15-13-503-00	211 S MAIN ST	498 AUSTIN LN	FOND DU LAC	WI	54935
FDL-15-17-15-13-504-00	213 S MAIN ST	498 AUSTIN LN	FOND DU LAC	WI	54935
FDL-15-17-15-13-546-00	10 WESTERN AVE	914 CARRIAGE LN	FOND DU LAC	WI	54935
FDL-15-17-15-13-545-00	6 WESTERN AVE	210 S MAIN ST	FOND DU LAC	WI	54935
FDL-15-17-15-13-547-00	14 WESTERN AVE	N4828 PINE RD	EDEN	WI	53019